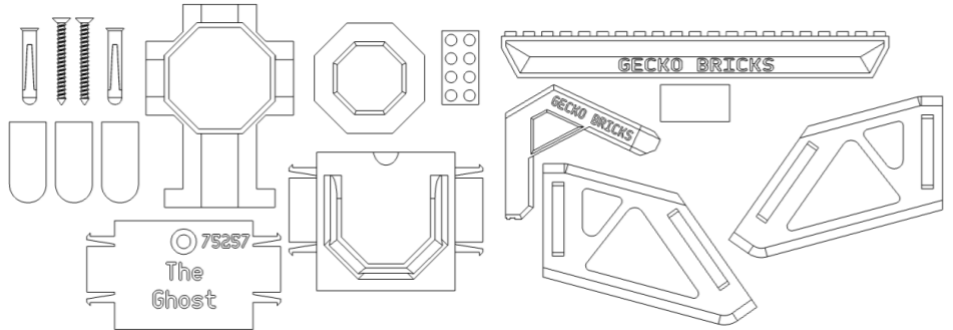


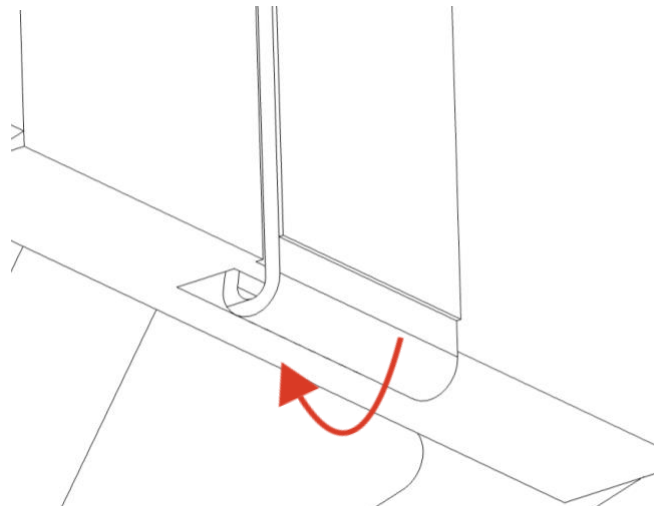
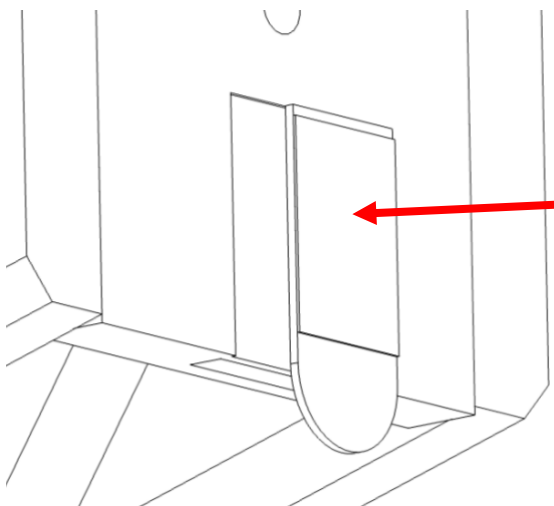
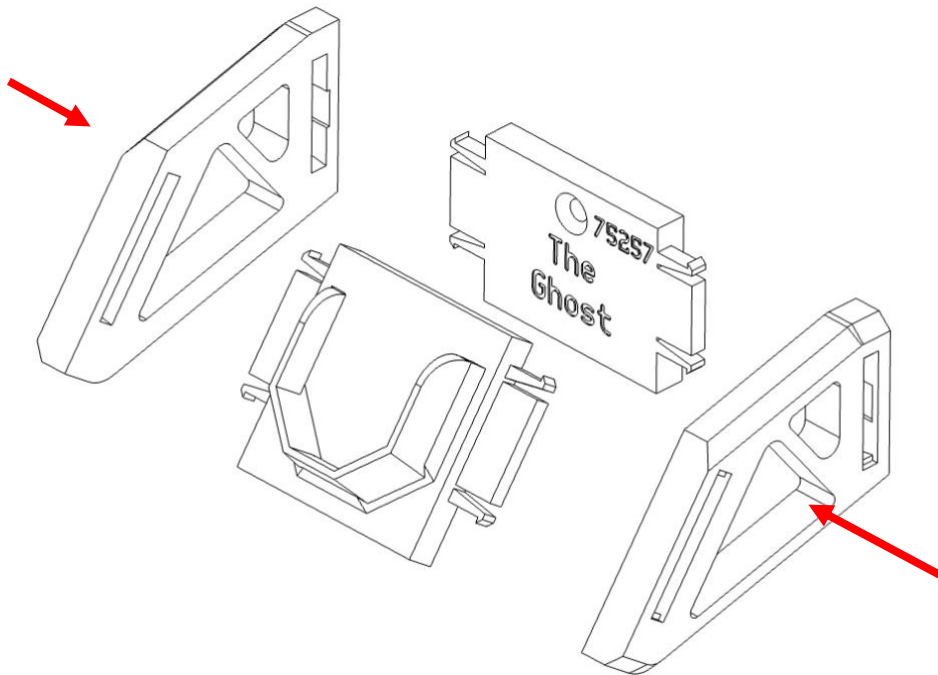
## Wall Mount Instructions

### Ghost & Phantom II – (75357)

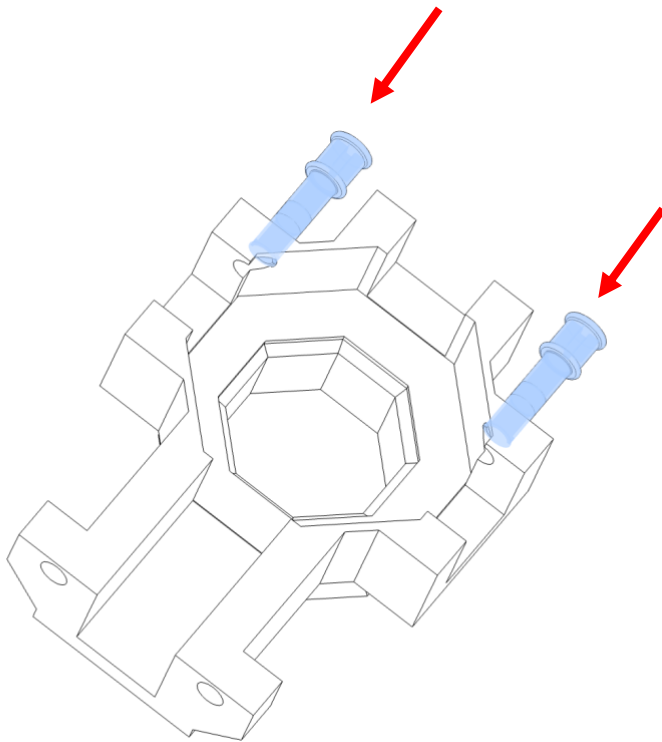
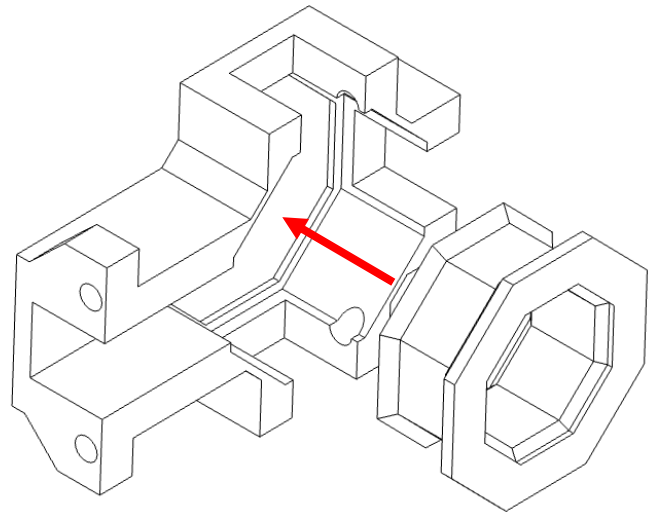
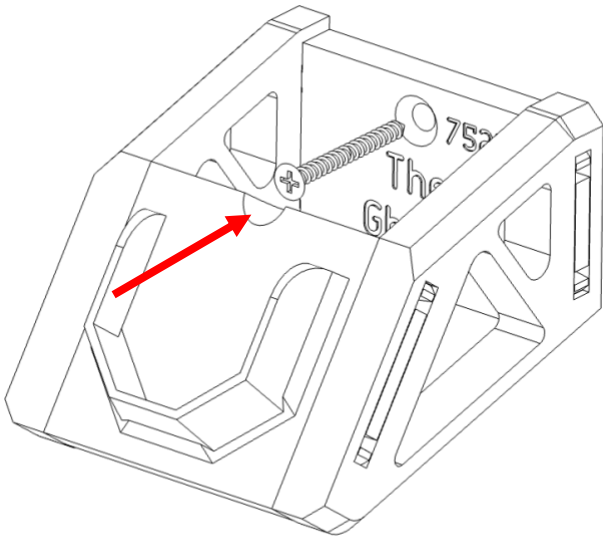
- 1x Left arm
- 1x Right arm
- 1x Main back stretcher
- 1x Main adaptor slot plate
- 1x Adaptor part A
- 1x Adaptor part B
- 1x Minifigure mount
- 1x Minifigure mount lug
- 1x Phantom II arm
- 1x Phantom II adaptor
- 2x Wall plug (6x30mm)
- 2x Wall screw (4.5x50mm)
- 3x Small Command strip



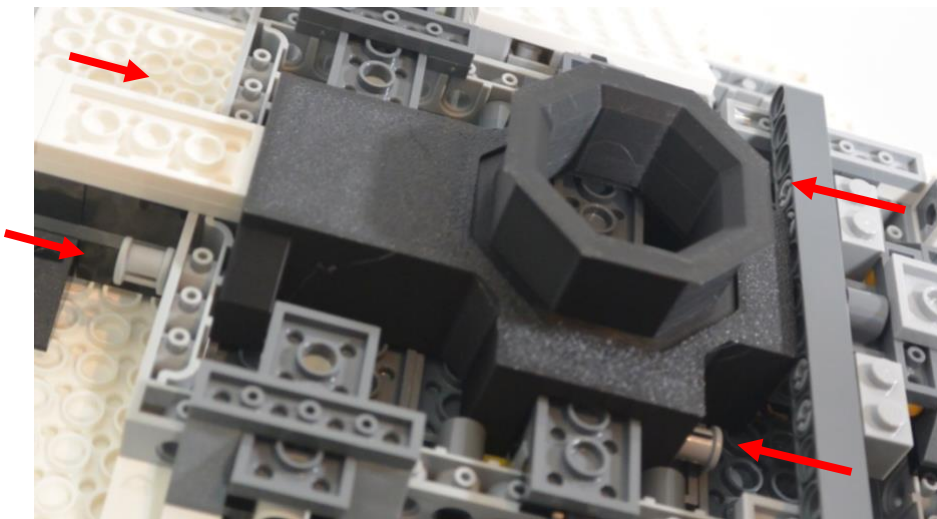
#### Ghost wall mount



## Wall Mount Instructions Ghost & Phantom II – (75357)

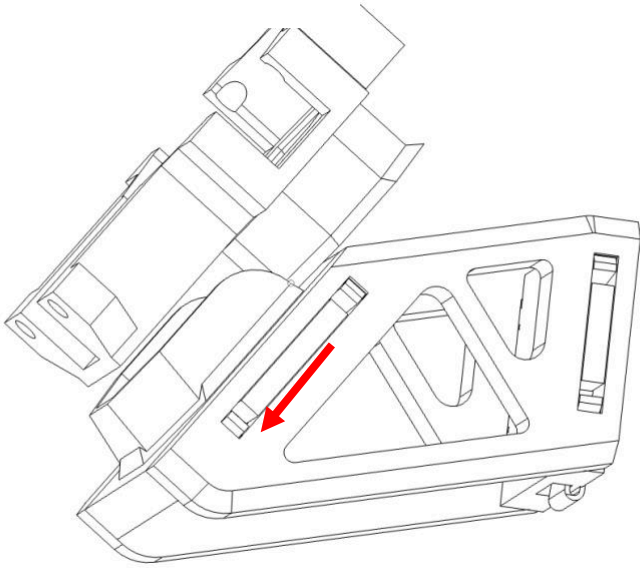


Partially insert the supplied technic push pins as shown

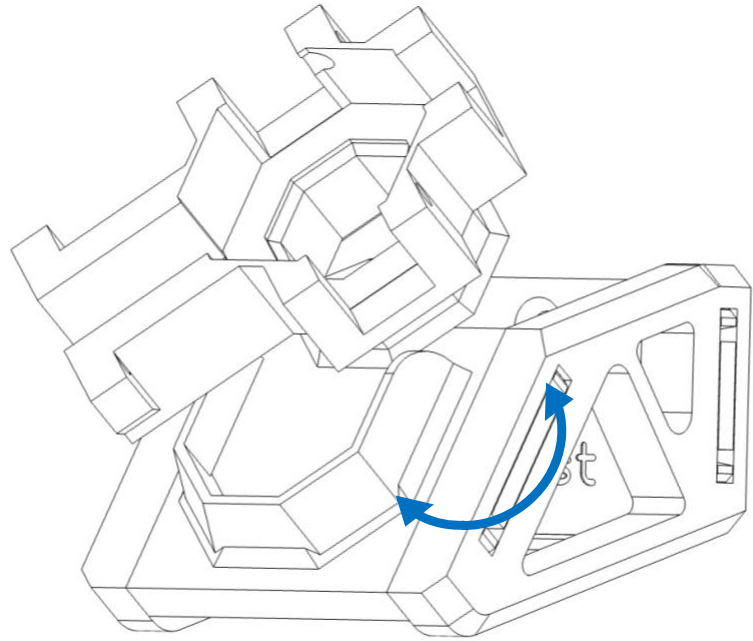


With the adaptor assembly seated in the Lego set push the 4 included Technic pins to secure in place

## Wall Mount Instructions Ghost & Phantom II – (75357)

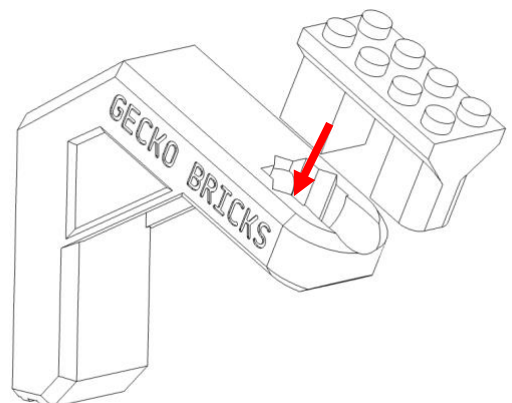
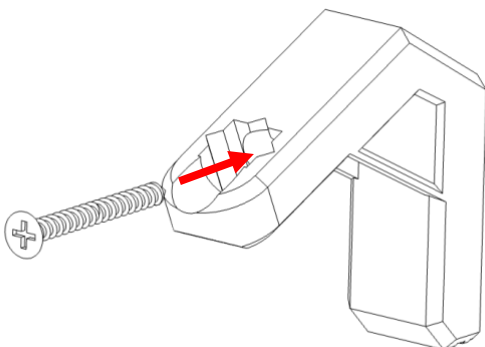
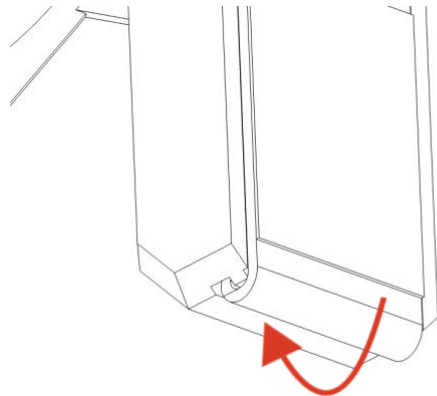
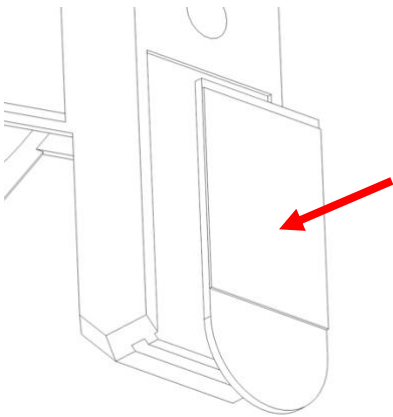


Slide the Lego ship and adaptor assembly into the wall mount



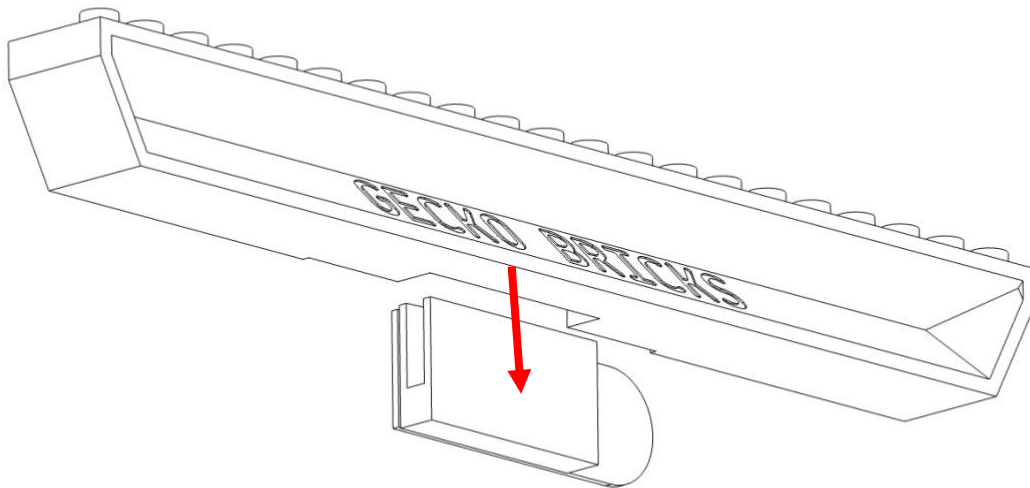
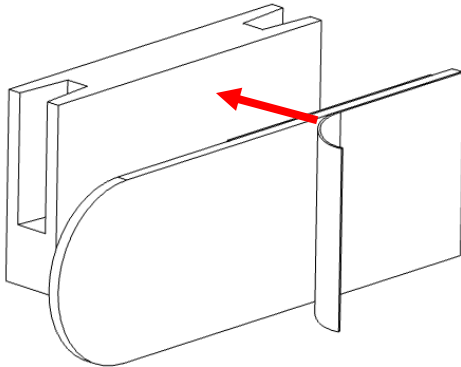
You can rotate the set to 8 positions and slide into the mount

### Phantom II wall mount



## Wall Mount Instructions Ghost & Phantom II – (75357)

### Minifigure wall mount



Attach the Minifigure mount lug to the wall first