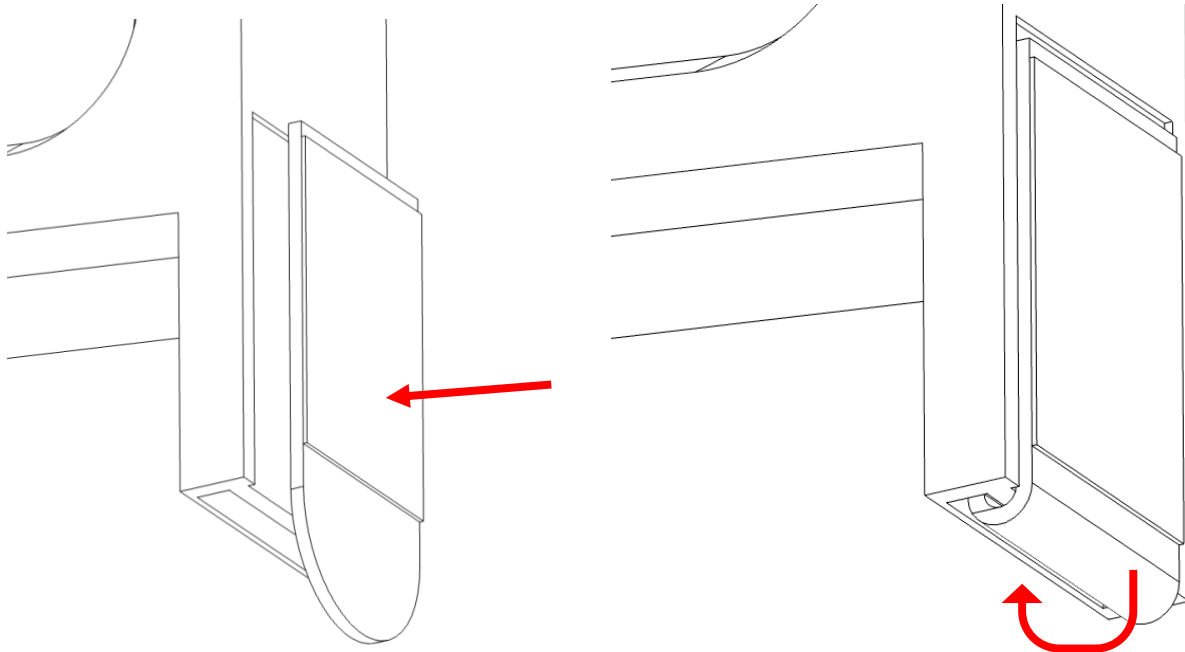


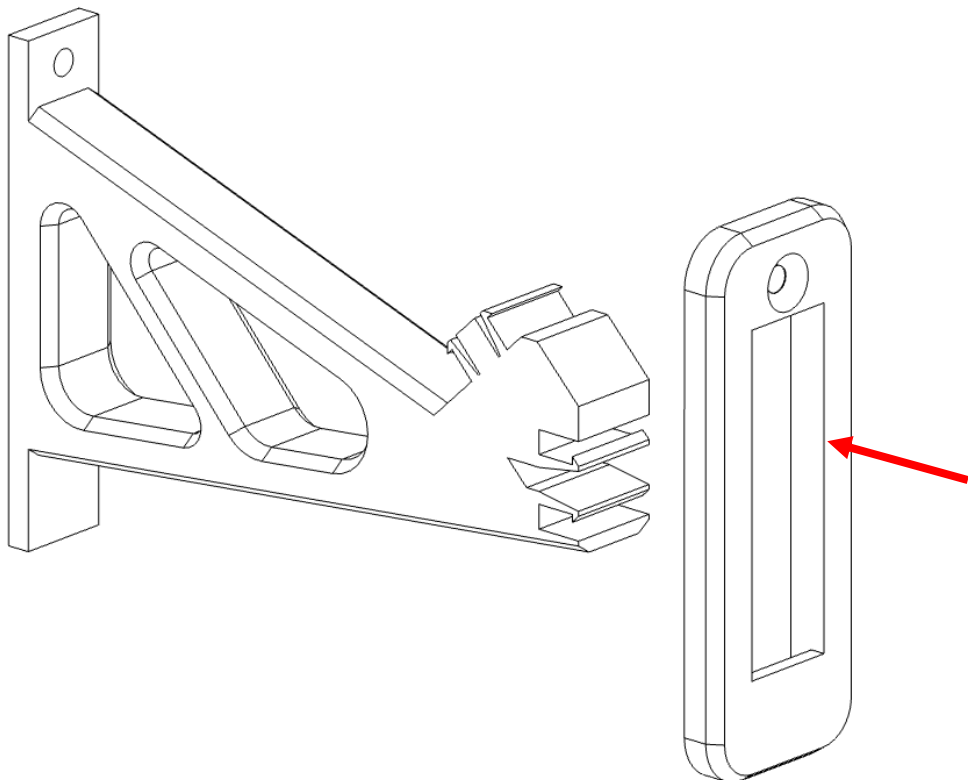
Wall mount Instructions For International Space Station – (21321)

wall mount October

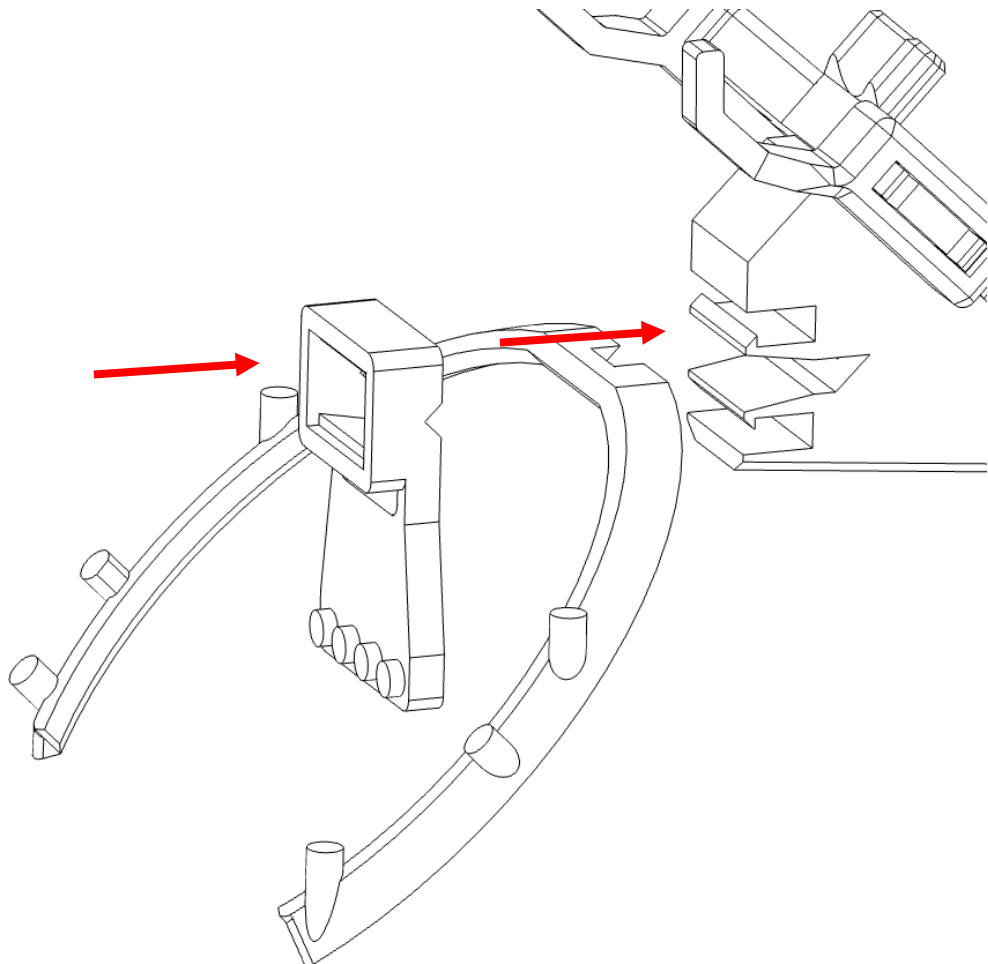
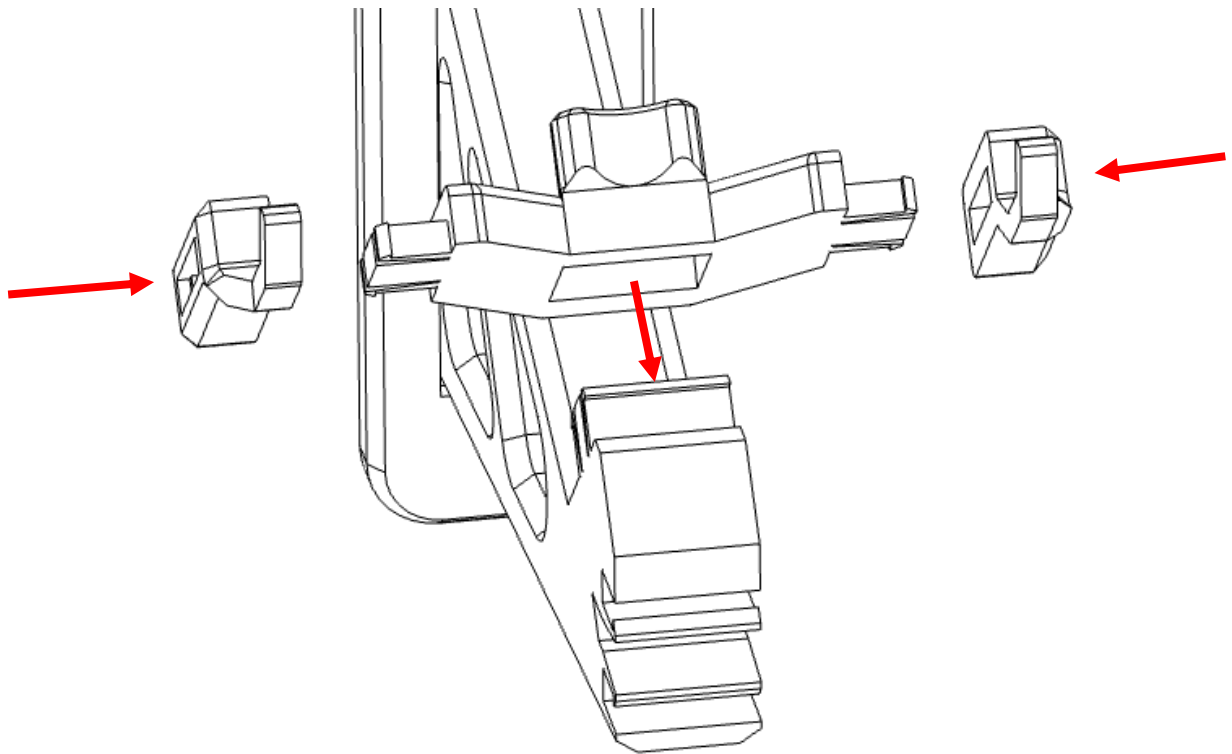
Previous version instructions available at the end of this document.



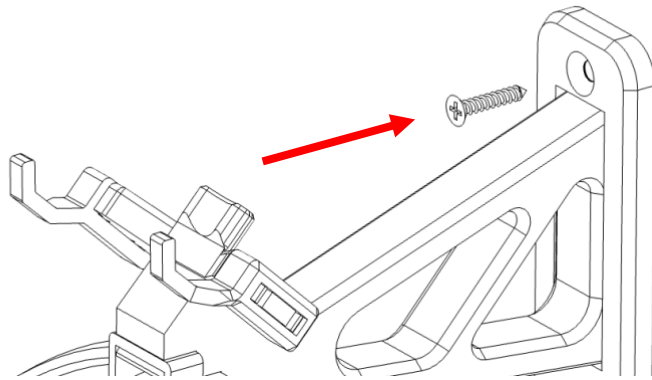
Use the included 3M command strip to prevent the mount from rotating around the fixing.



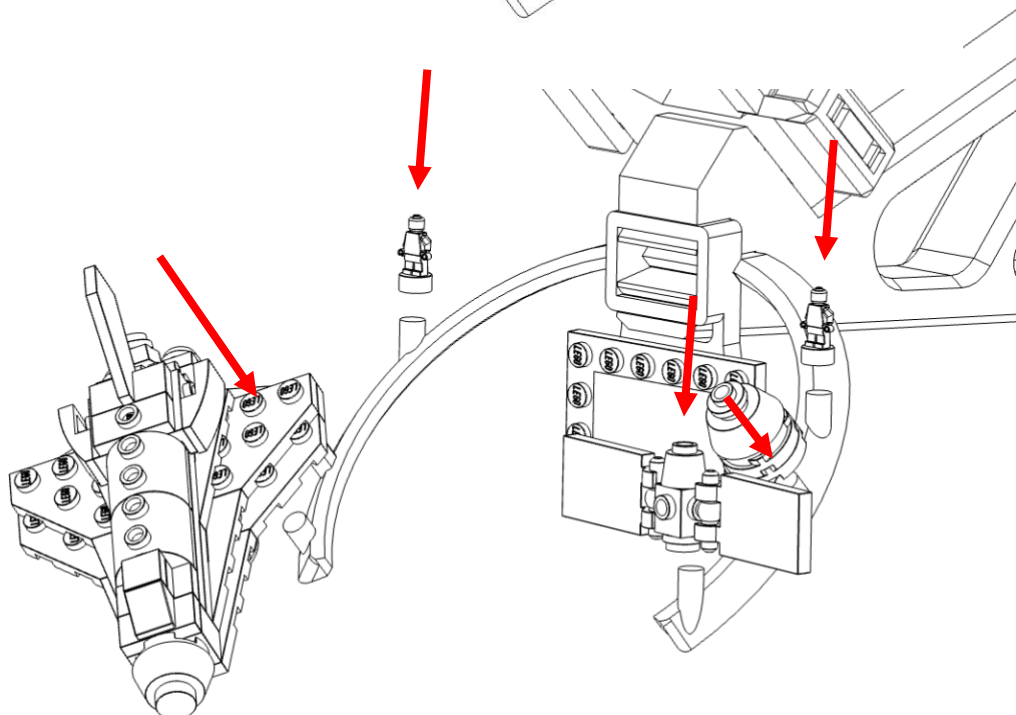
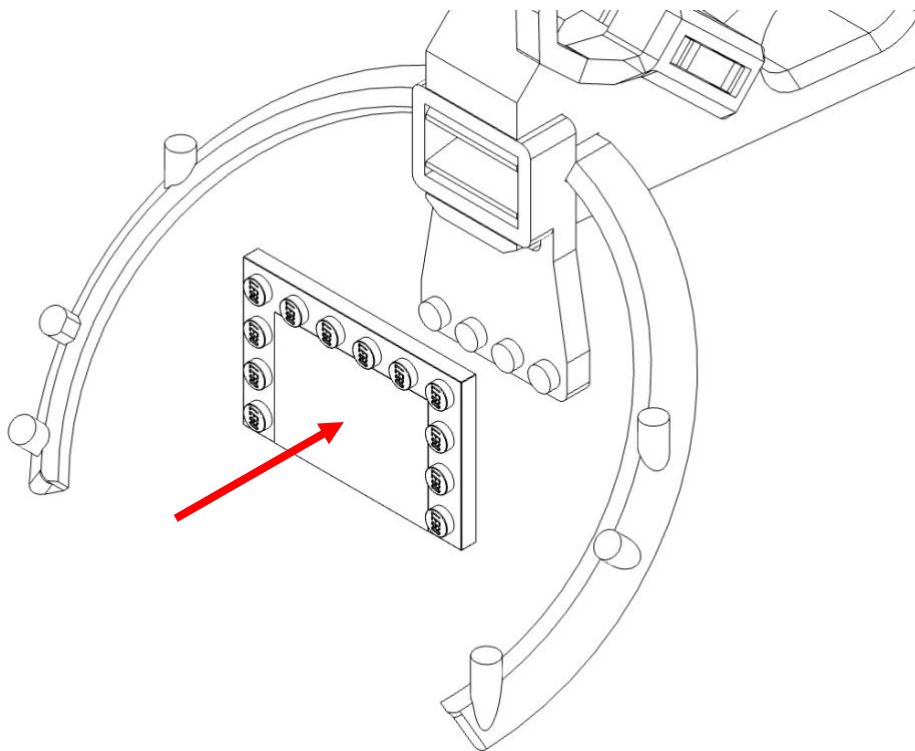
**Wall mount Instructions
For International Space Station – (21321)**

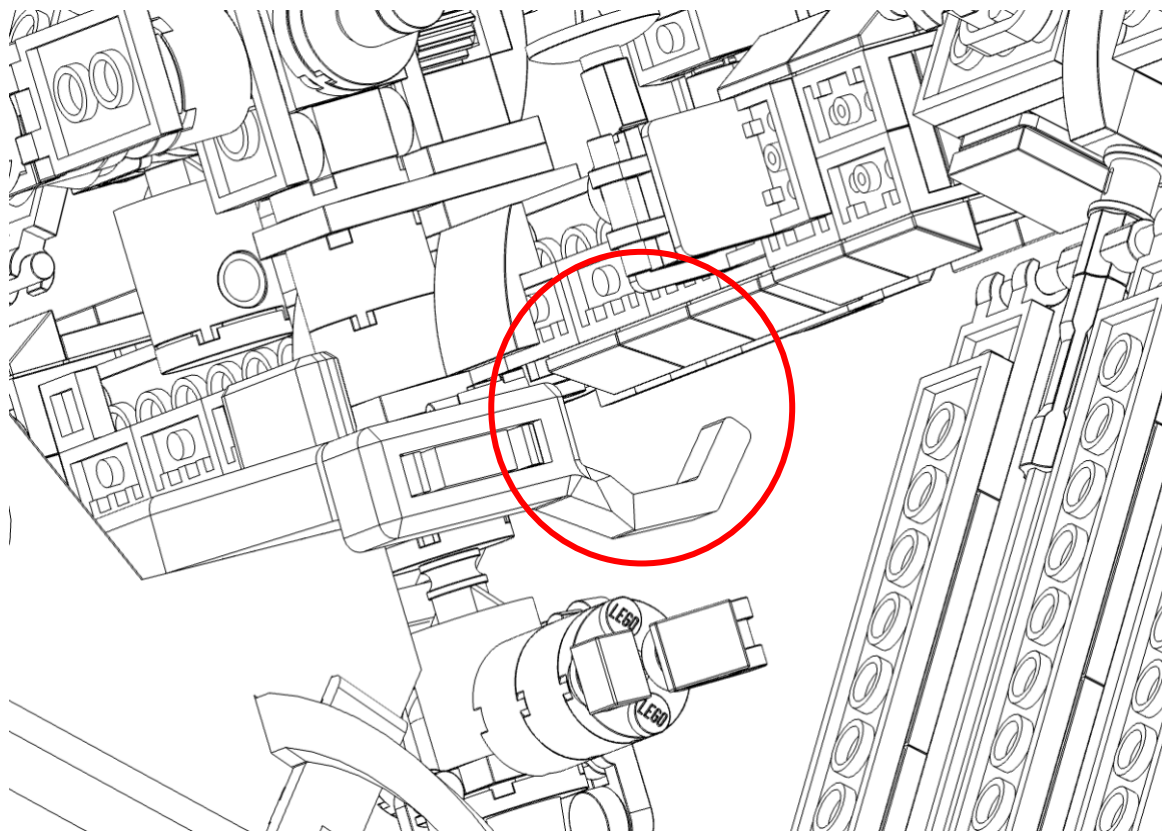


Wall mount Instructions For International Space Station – (21321)



Use a Philips screwdriver to screw in the fixing. Do not over tighten.





Wall mount Instructions
For International Space Station – (21321)

